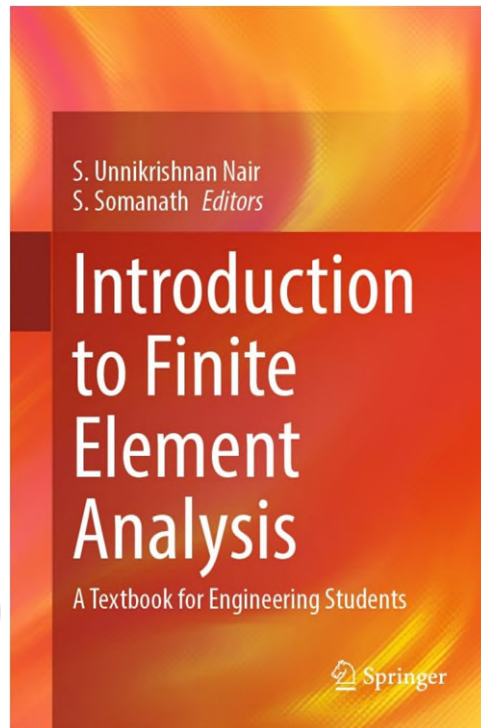


Coloured Figures and Illustrations
For
Introduction to Finite Element Analysis



The colour images in this file are for individual and personal use of readers of the textbook *Introduction to Finite Element Analysis*. All figures from the book are not reproduced in this file. Only figures and illustrations that require colour detail for enhanced comprehension are included here. This set of figures is not intended to be used as standalone resource. It must be used in conjunction with the textbook.

This work is subject to copyright. All rights are solely and exclusively licensed by the Publisher, whether the whole or part of the material is concerned, specifically the rights of translation, reprinting, reuse of illustrations, recitation, broadcasting, reproduction on microfilms or in any other physical way, and transmission or information storage and retrieval, electronic adaptation, computer software, or by similar or dissimilar methodology now known or hereafter developed.

Hosting of this material on institutional repositories or its use in presentation or derivative publications, is not permitted without the prior express written consent of Springer Nature.

Chapter 1

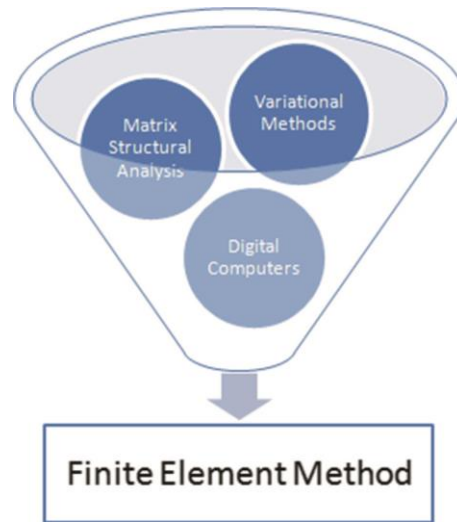


Fig. 1.1 Finite element method—a confluence of three different domains

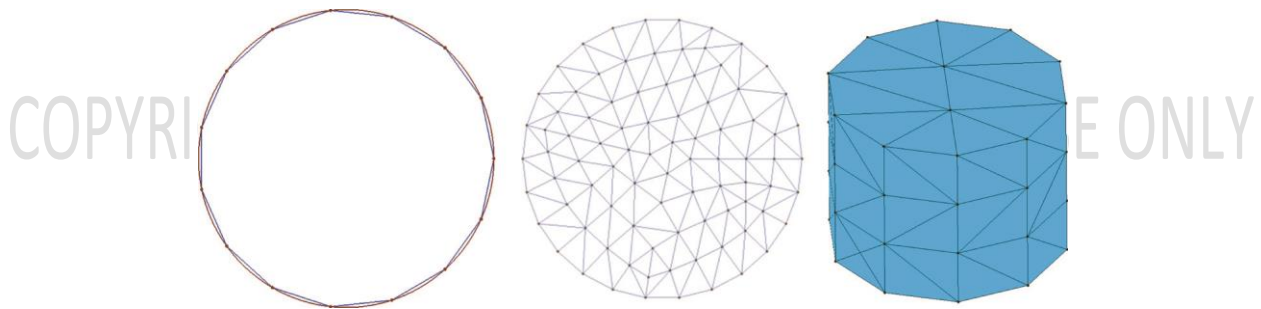


Fig. 1.2 Archimedes' concept of discretization with known geometries

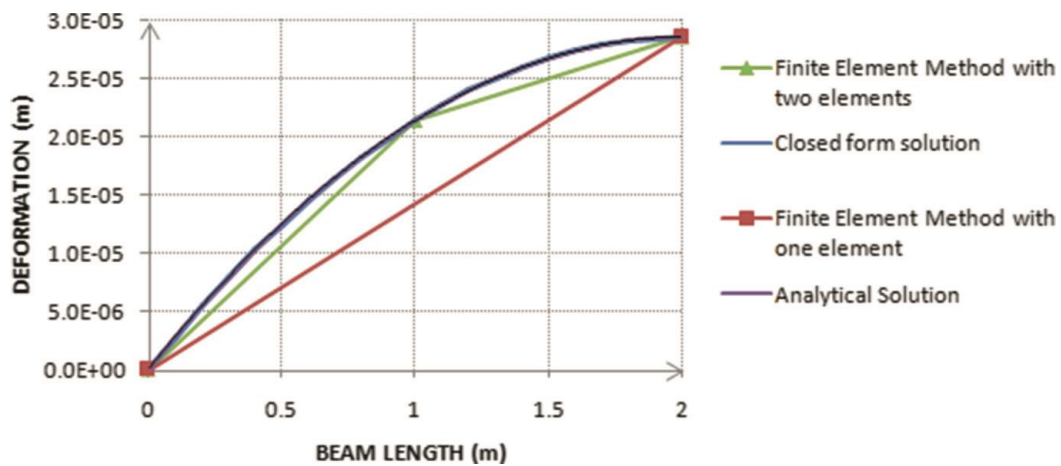


Fig. 1.7 Variation of u along the length of beam for different methods

Chapter 7

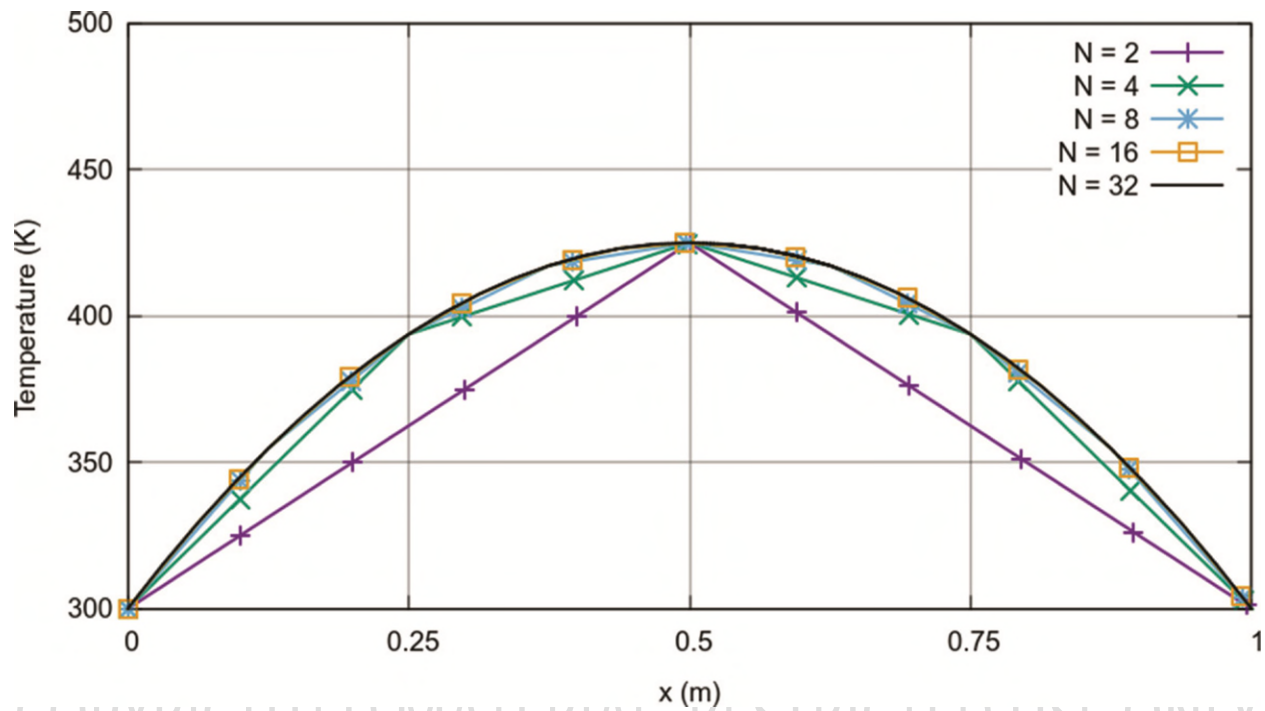


Fig. 7.2 Temperature distribution inside the domain

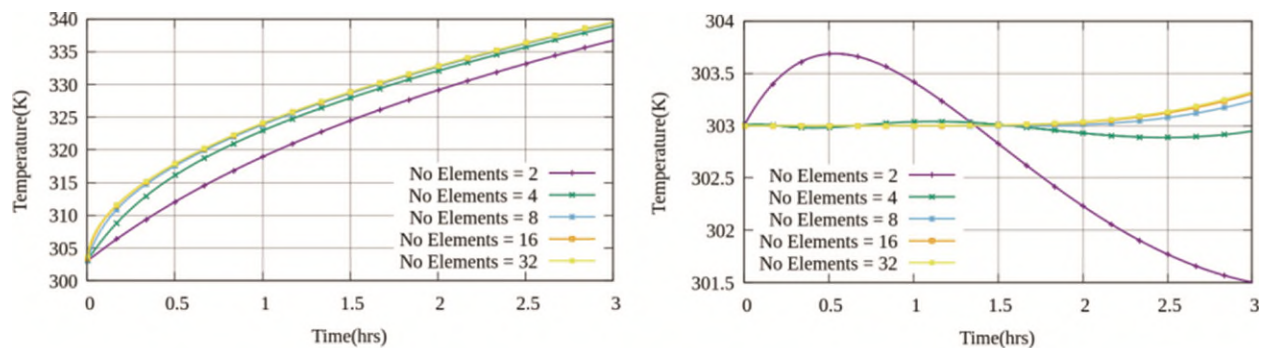


Fig. 7.5 Temperature history of the inner and outer side of brick wall

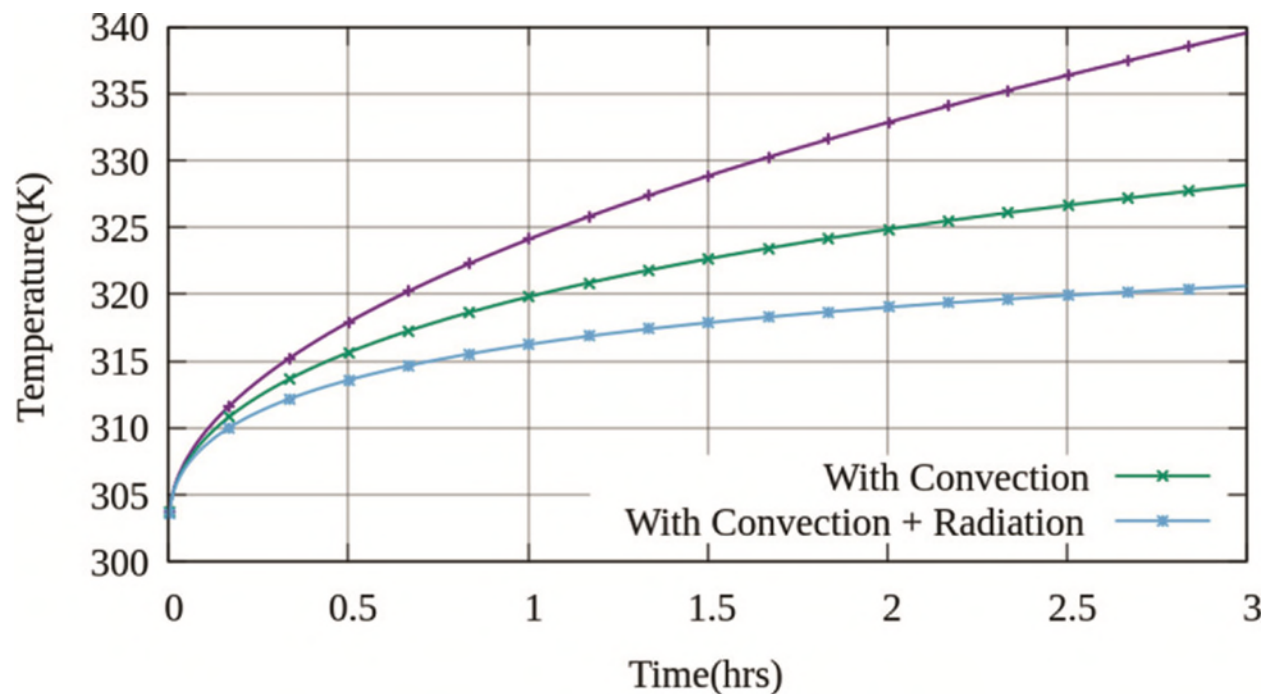


Fig. 7.6 Temperature history of outer wall for three cases

COPYRIGHTED MATERIAL. RESTRICTED USE ONLY

Chapter 10

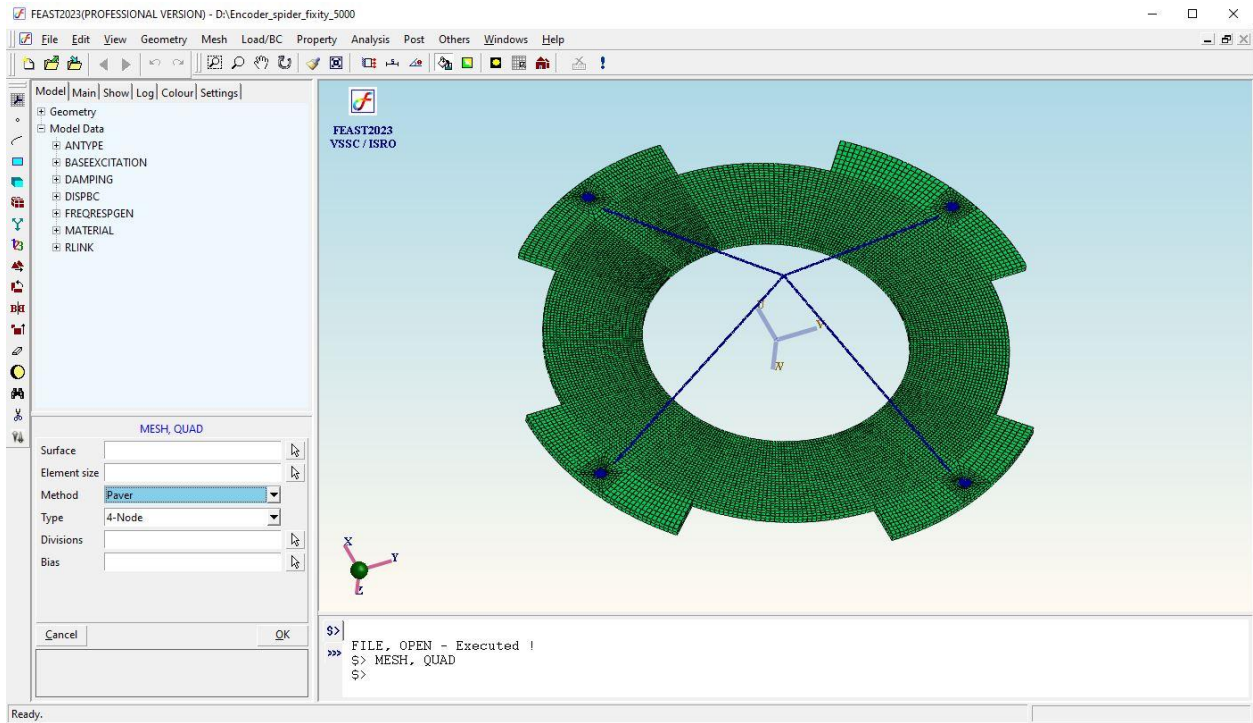


Fig. 10.1 PreWin graphical user interface

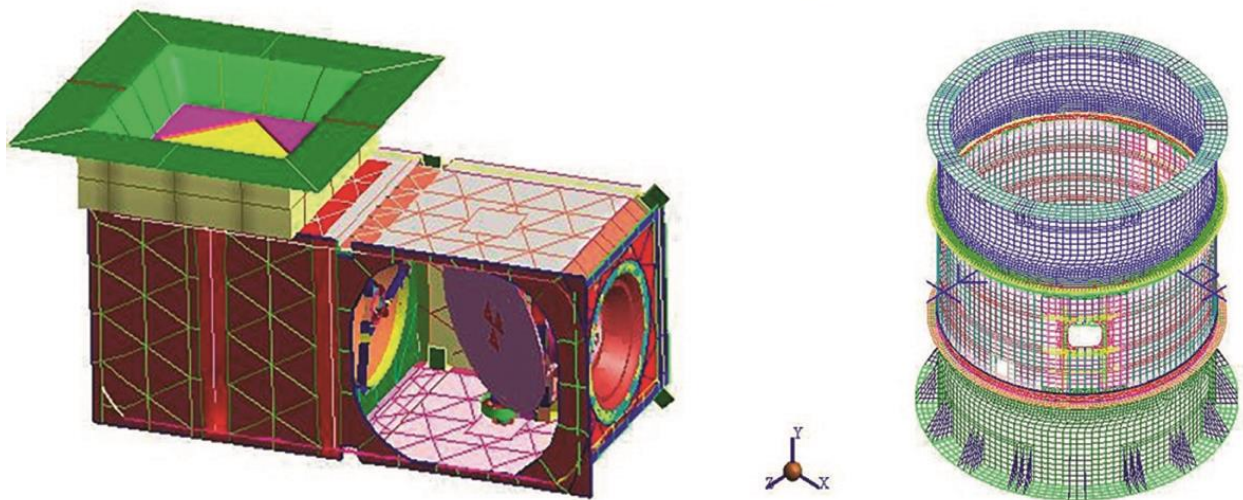


Fig. 10.2 Attribute-based shading

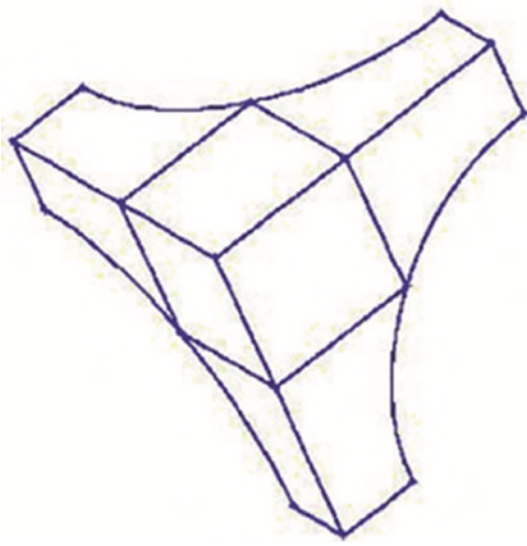


Fig. 10.3 Geometric modelling

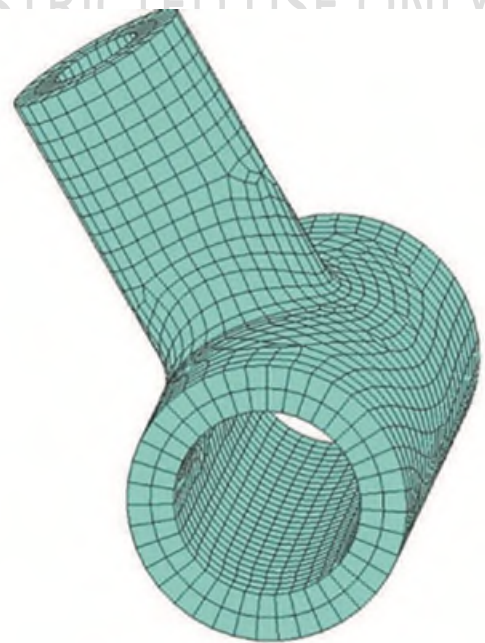
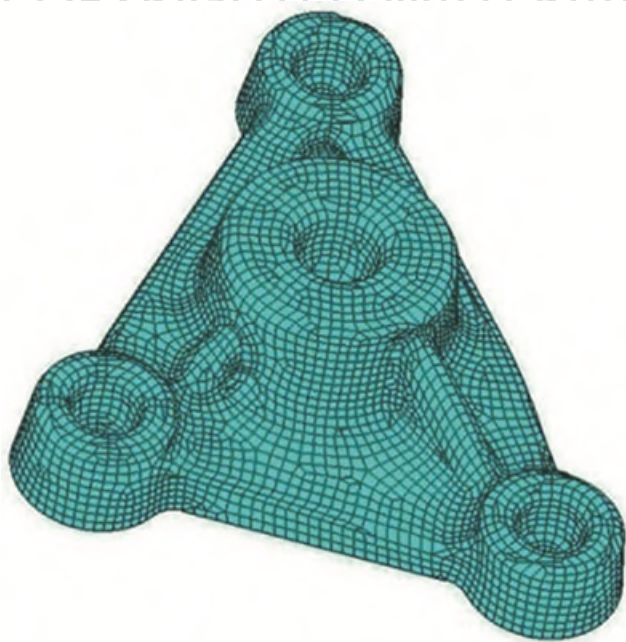


Fig. 10.4 Mesh on surfaces and solids

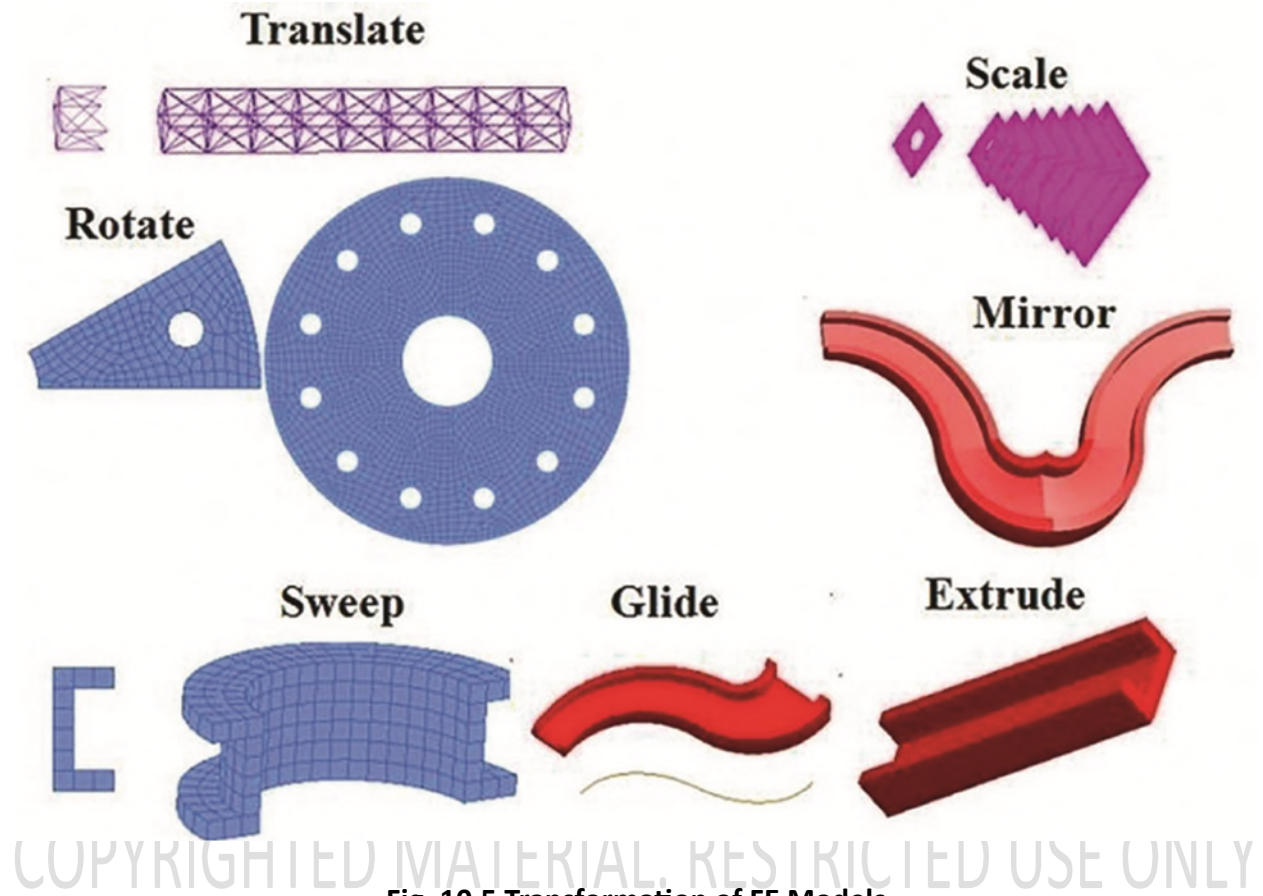


Fig. 10.5 Transformation of FE Models



Fig. 10.6 Post processor graphics

Chapter 11

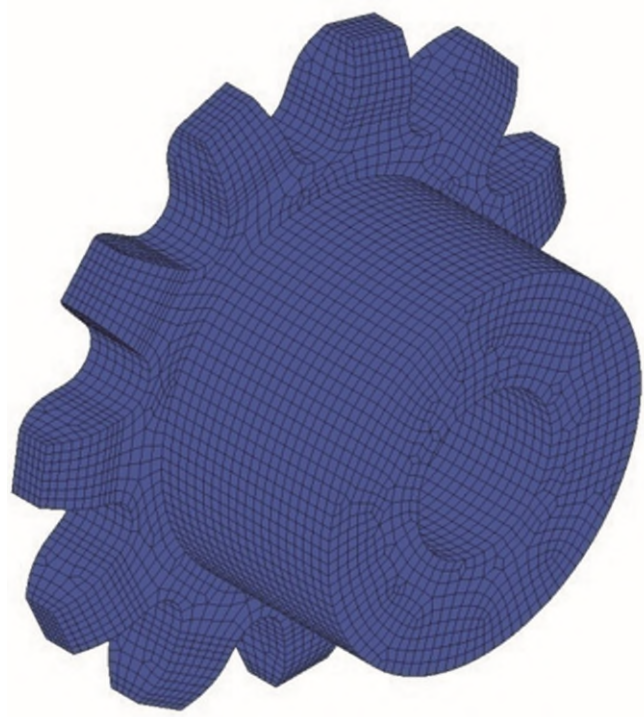


Fig. 11.1 Gear hub meshed with solid elements

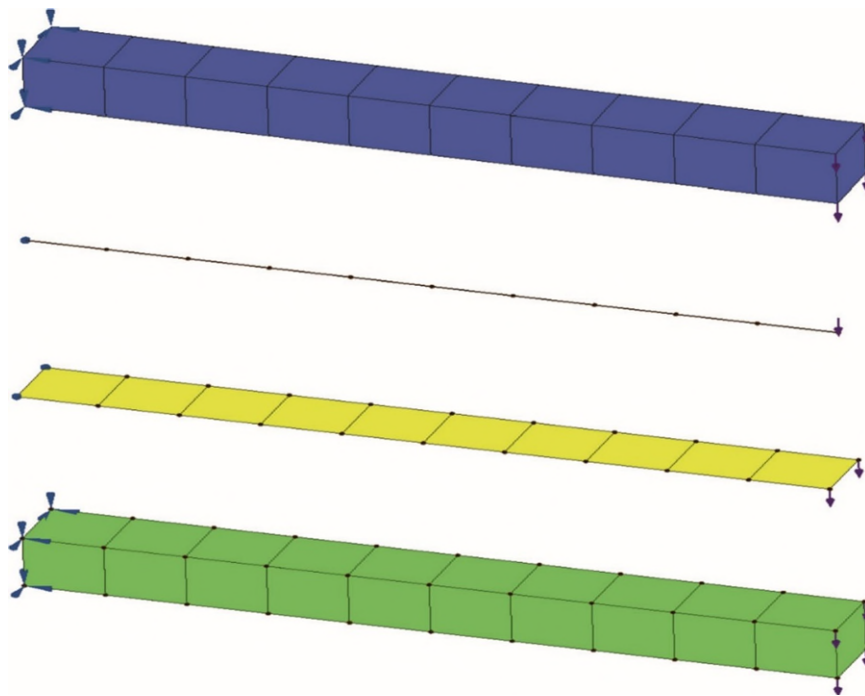


Fig. 11.2 Cantilever beam subjected to end load with different element discretizations

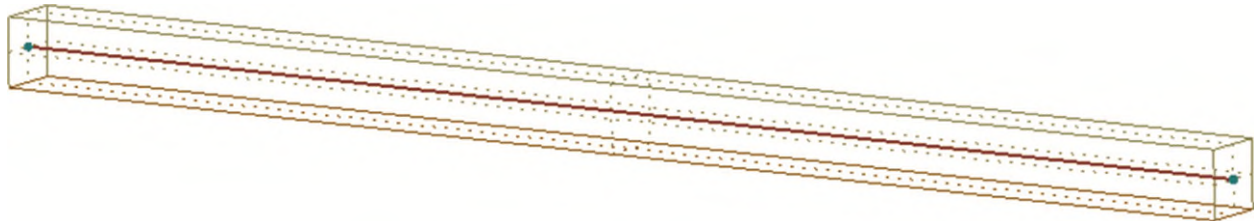


Fig. 11.3 Beam element idealized through the cross-sectional centroid of beam structure

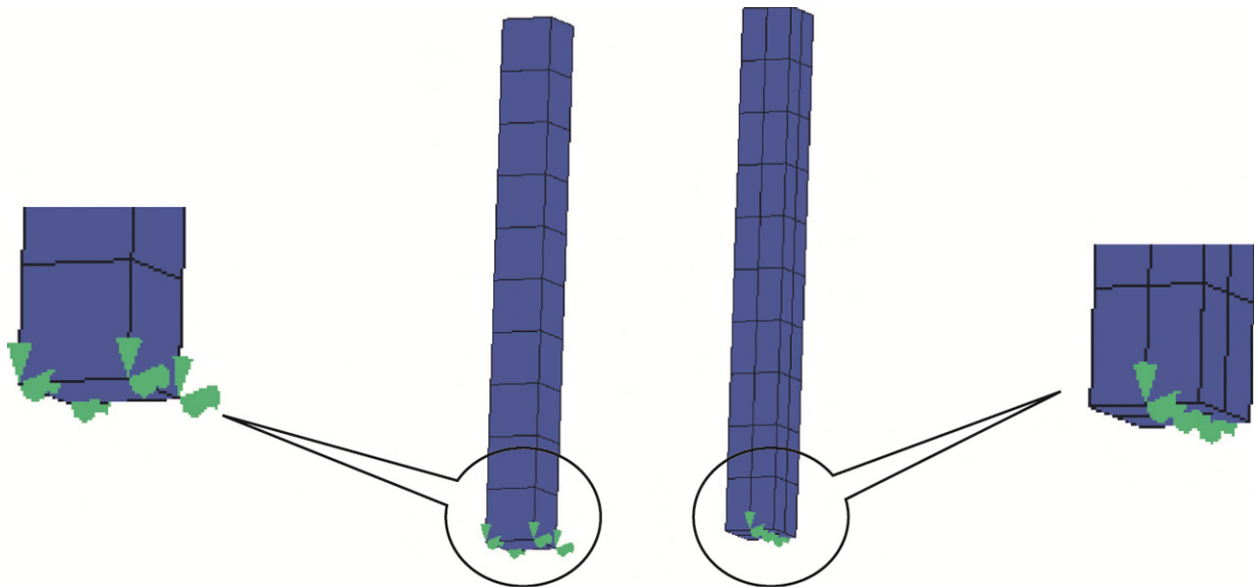


Fig. 11.12 Simply supported boundary condition for model discretized with solid elements

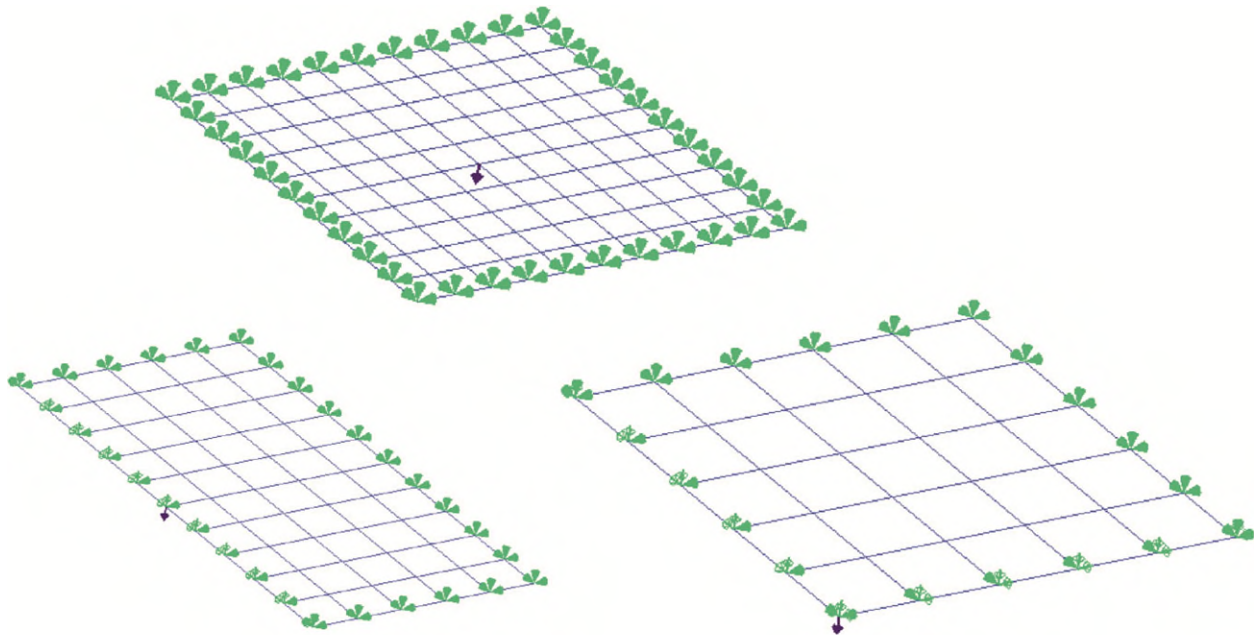


Fig. 11.13 Simply supported plate—full model, half model, quarter model

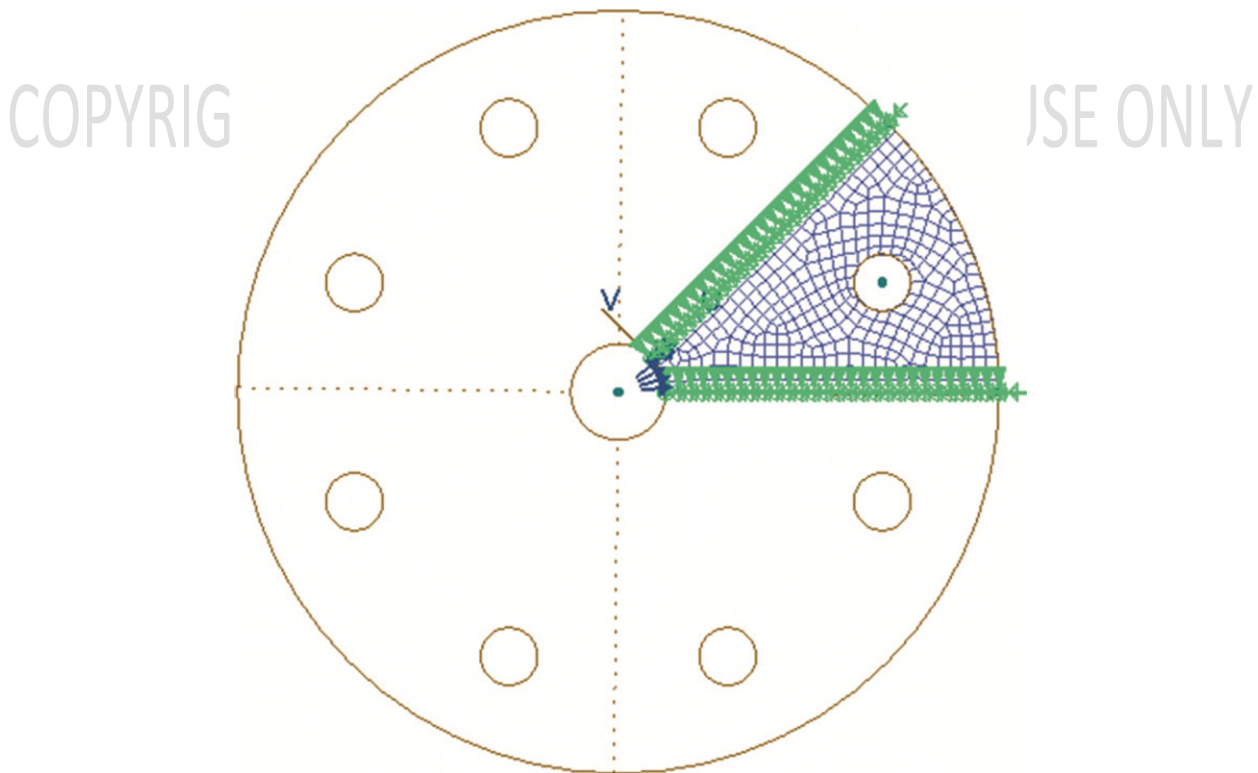


Fig. 11.16 Structure with cyclic symmetry

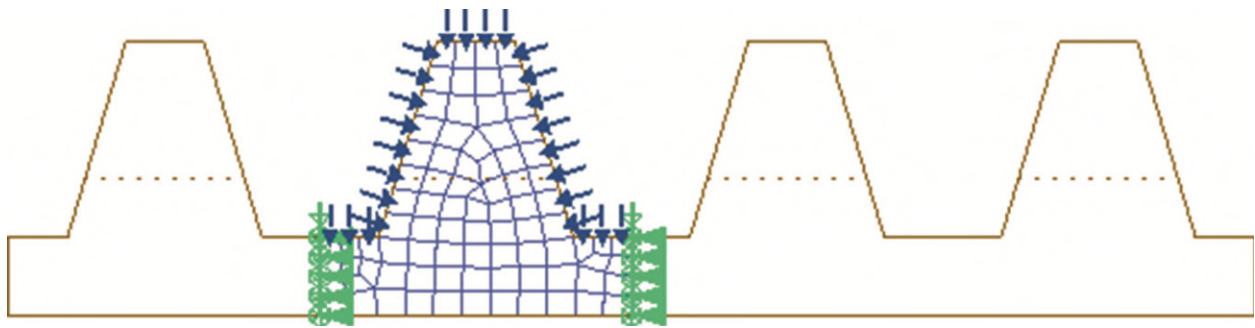


Fig. 11.17 Structure with repetitive symmetry

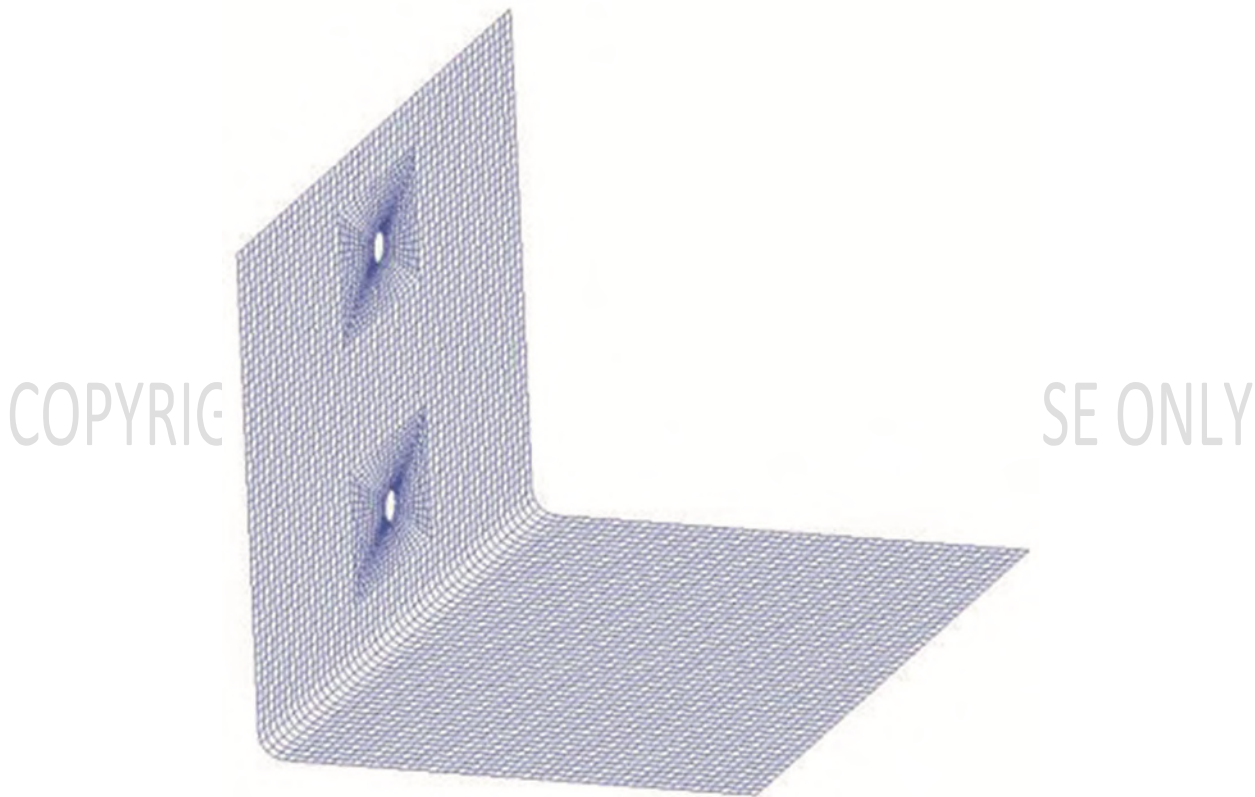
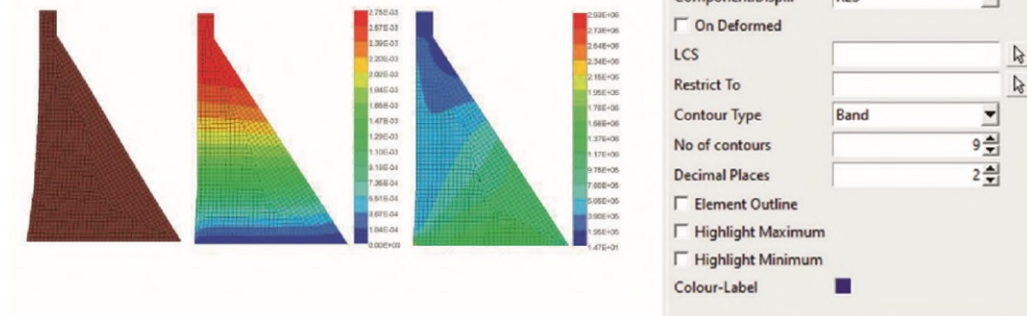


Fig. 11.18 Meshing of a structure with fillets and holes

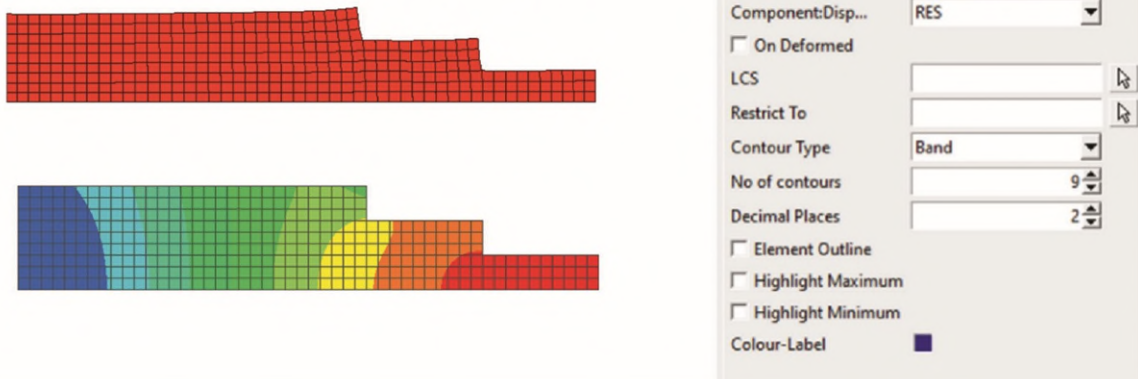
Chapter 12

Command : POST, CONTOUR
Menu : Post → Contour



Unnumbered figure from Section: 12.1.3 Post-processing (Displacement/Stress/Strain Contour)

Command : POST, CONTOUR
Menu : Post → Contour



Unnumbered figure from Section 12.4.3 Post-processing (Displacement/Stress/Strain Contour)

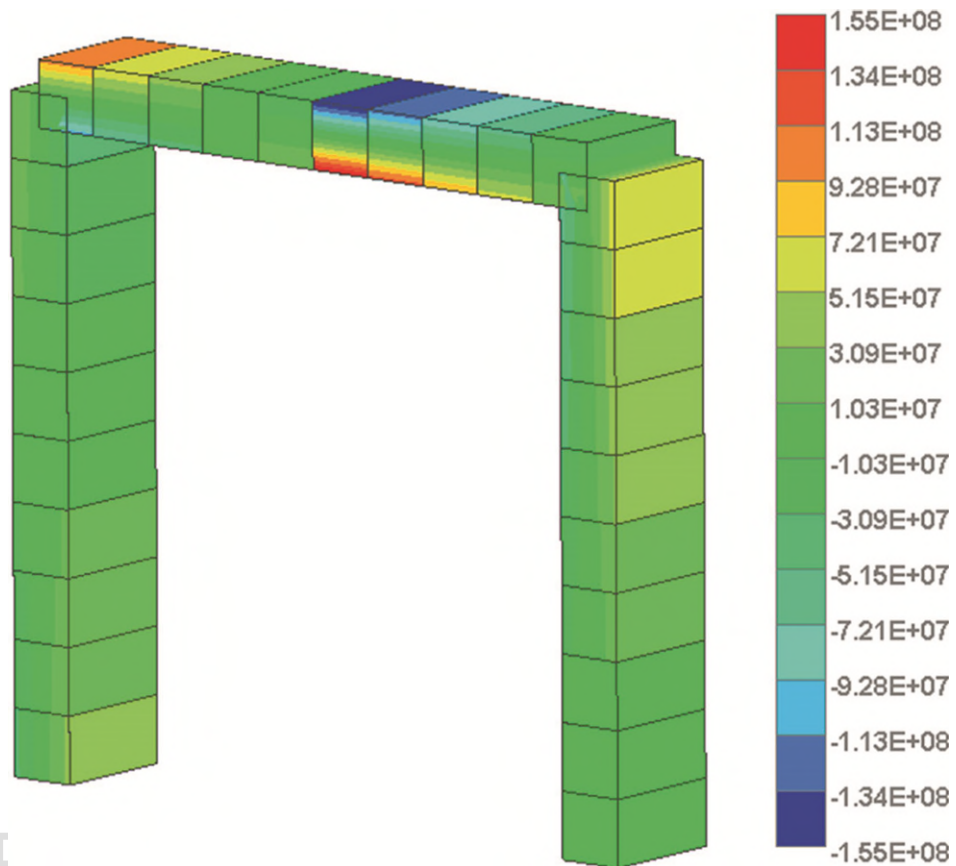


Fig. 12.4 Realistic stress plot

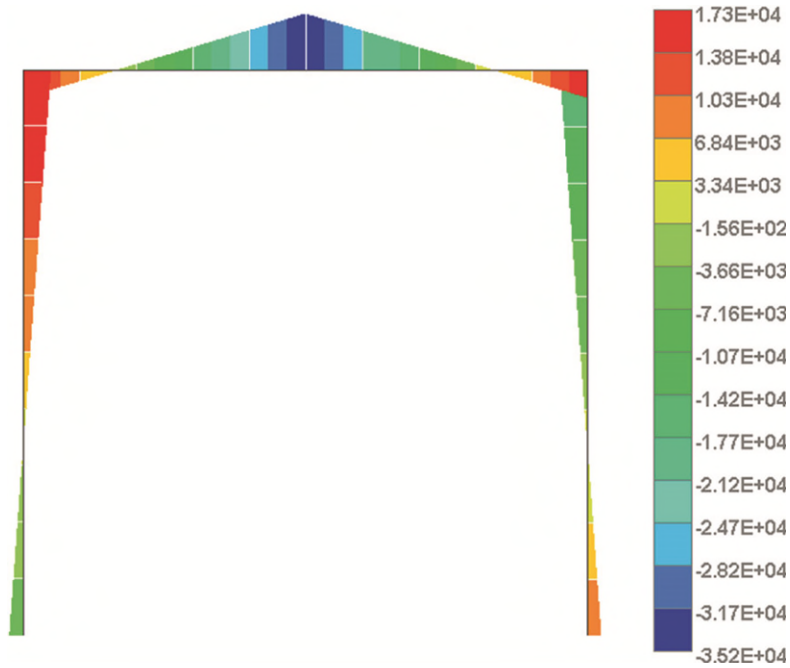
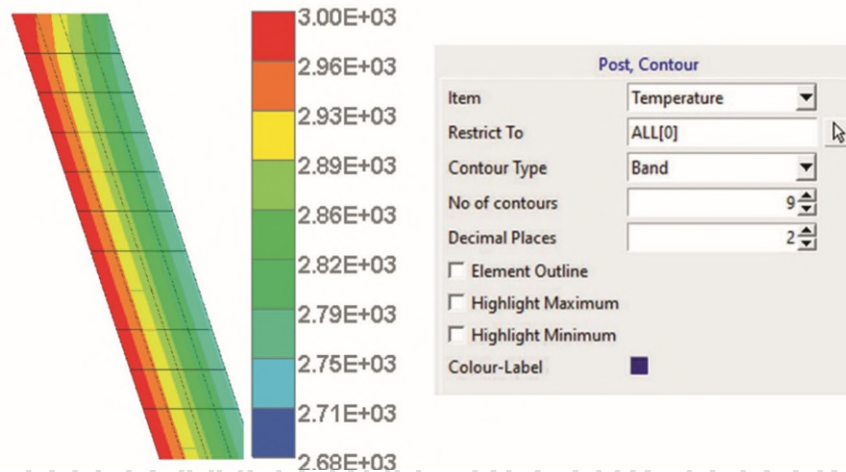


Fig. 12.5 Bending moment diagram

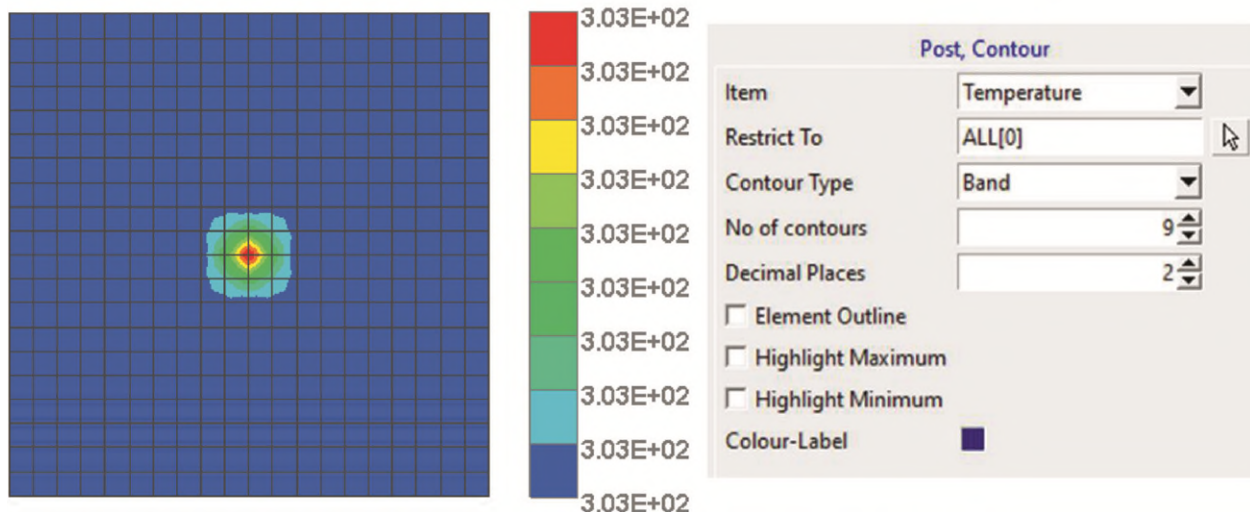
Chapter 13

Command : POST, CONTOUR
Menu : Post → Contour



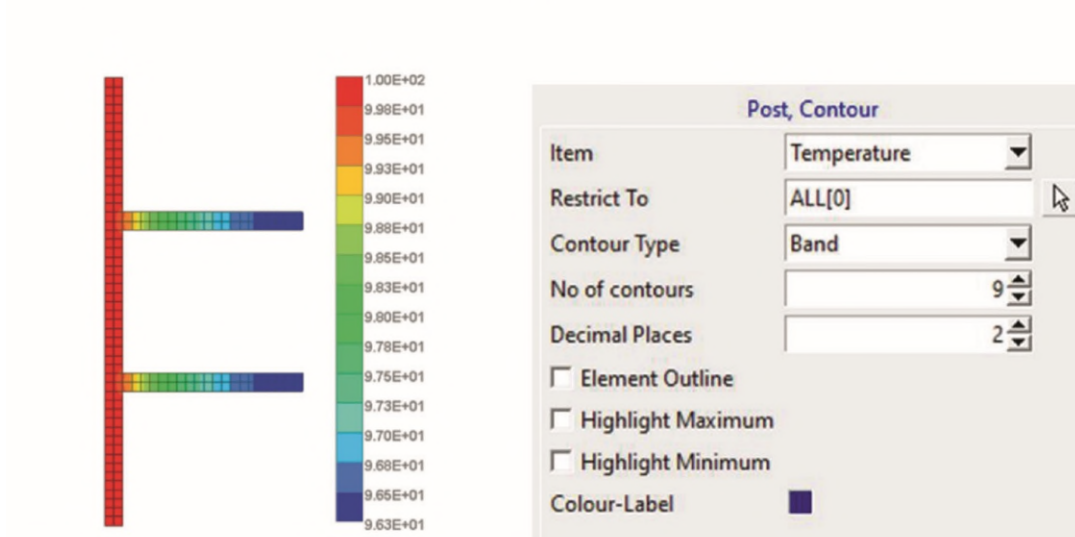
COPYRIGHTED MATERIAL. RESTRICTED USE ONLY
Unnumbered figure from Section: 13.1.3 Post-processing (Temperature Contour)

Command : POST, CONTOUR
Menu : Post → Contour



Unnumbered figure from Section: 13.2.3 Processing (Temperature Contour)

Command : POST, CONTOUR
Menu : Post → Contour



Unnumbered figure from Section: 13.3.3 Post-processing (Temperature Contour)

COPYRIGHTED MATERIAL. RESTRICTED USE ONLY

Chapter 14

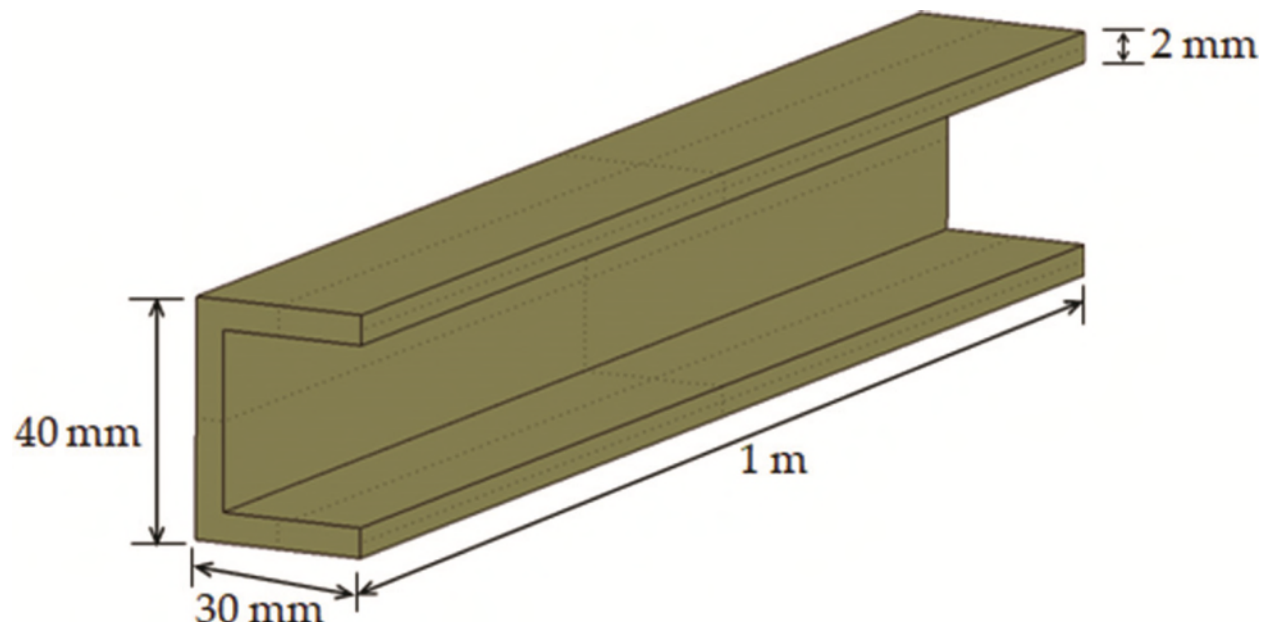


Fig. 14.1 C-section beam

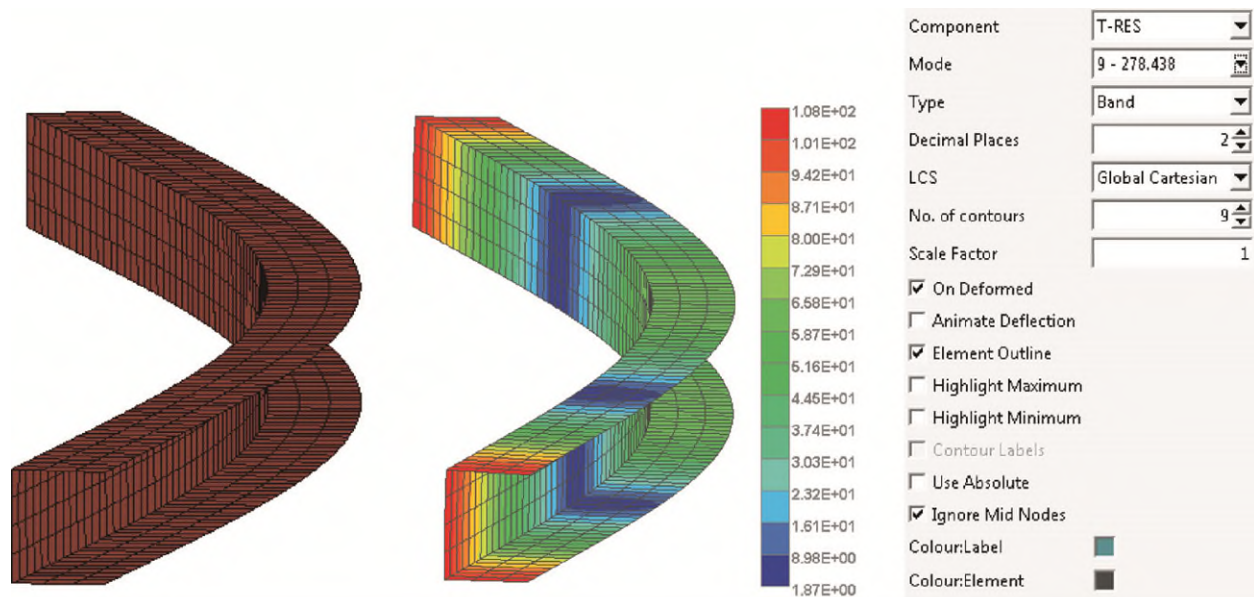


Fig. 14.2 Elastic mode of a C-section beam

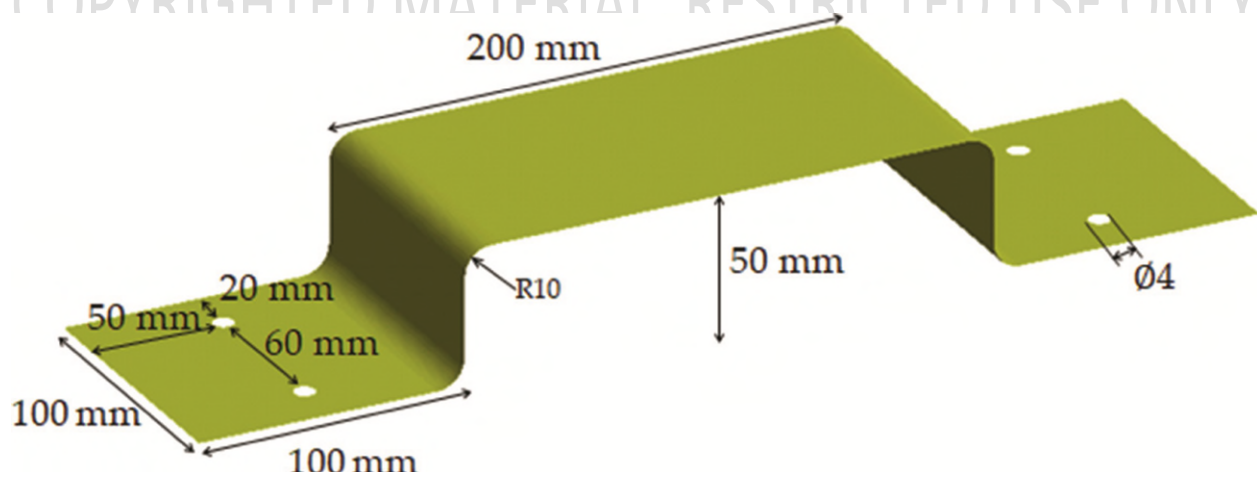
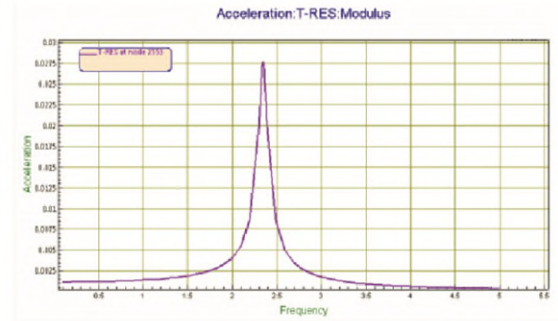


Fig. 14.3 Electronic package mounted on a bracket

Command : POST,HISTORYPLOT
Menu : Post → History Plot

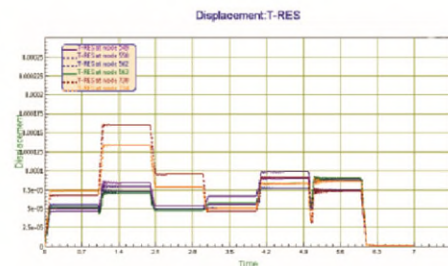
Item	Acceleration
Component	T-RES
Complex	Modulus
As	



Unnumbered figure from Section: 14.2.3 Post-processing (View History Plot)

Command : POST,HISTORYPLOT
Menu : Post → History Plot

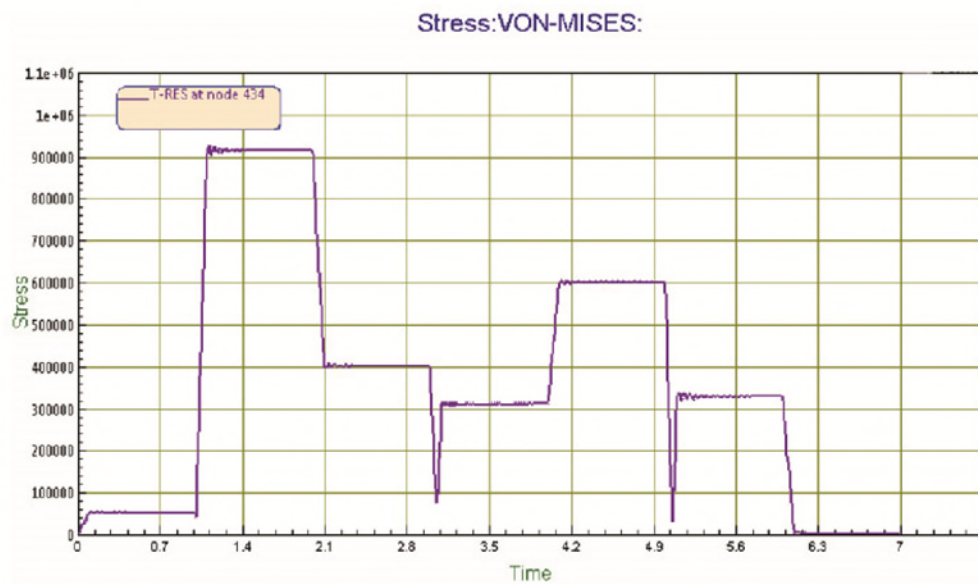
Item	Displacement
Component	RES
Nodes	Use Mouse to pick the Nodes



Unnumbered figure from Section: 14.4.2 Post-processing (View History Plot)

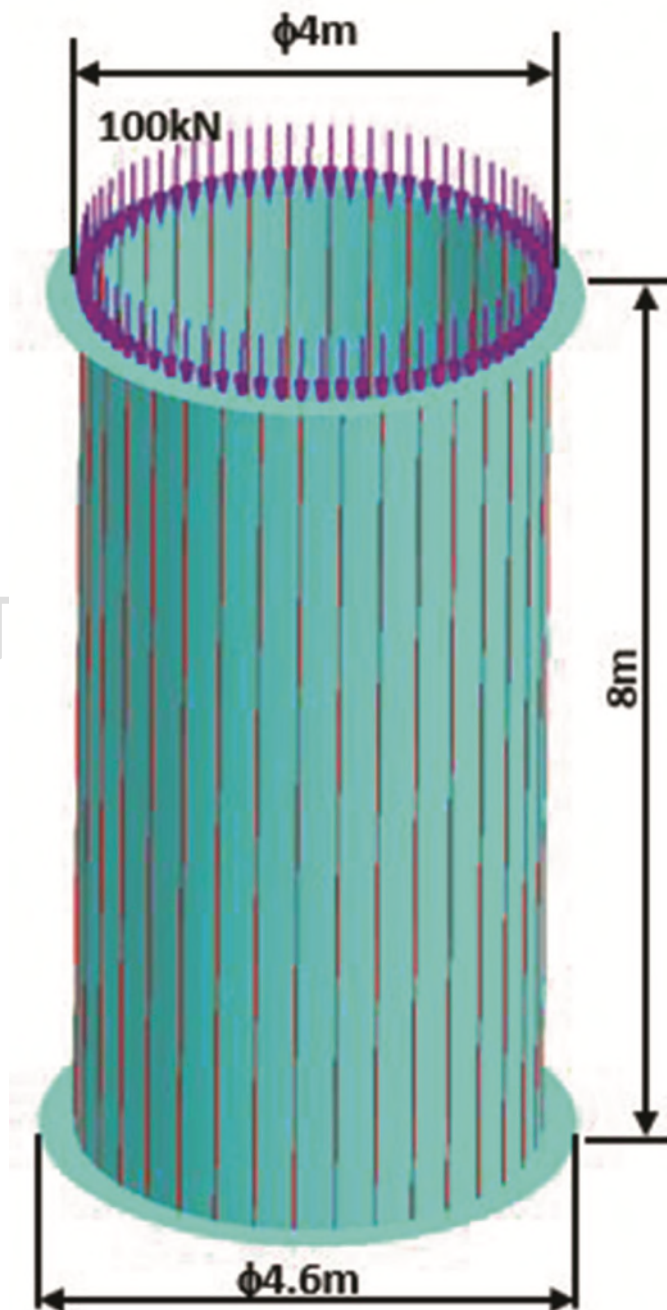
Command : POST,HISTORYPLOT
Menu : Post → History Plot

Item	Stress
Surface	Top
Component	von Mises
Nodes	Use Mouse to pick the Nodes



Unnumbered figure from Section: 14.4.2 Post-processing (View Stress Plot)

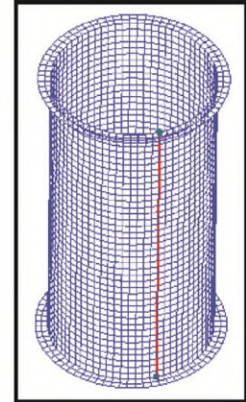
Chapter 15



15.1 Cylinder with compressive loading

Commands : EDGEMESH, STIFFENER
 Menu : Mesh → FE Mesh → Using Edges → Stiffener
 Parameters : (To be filled by the user)

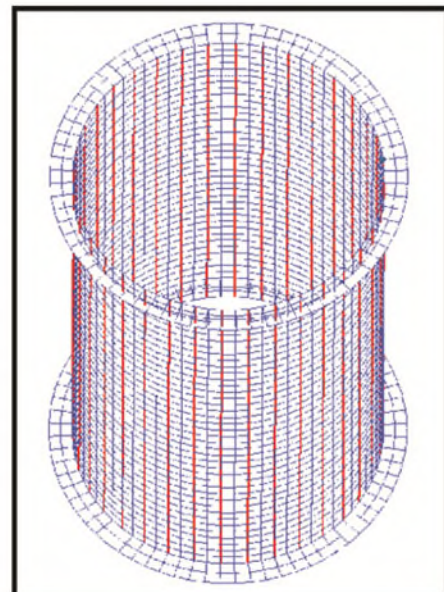
Element edges	Use mouse to select the Element edges
Material ID	1
Property ID	1



Unnumbered figure from Section: 15.2 Pre-processor (Create Stiffeners)

Commands : ELEMENT, ROTATE
 Menu : Mesh → Element → Transform → Rotate
 Parameters : (To be filled by the user)

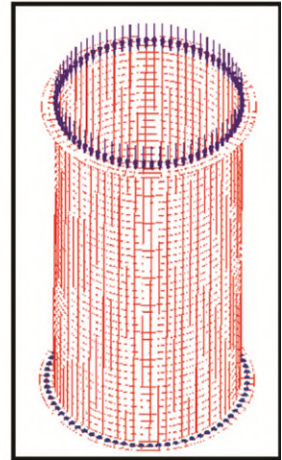
List of Elements	Use mouse to select the elements
Angle	10
Axis	Y Axis
Location	0:0:0
Copies	35



Unnumbered figure from Section: 15.2 Pre-processor (Create more stiffeners using Rotate element option)

Commands : POINTLOAD,ADD
Menu : Load/BC → Structural → Point Load
Parameters : (To be filled by the user)

Nodes	Cylinder top nodes (1/4/84T2913B41)
Magnitude	-100
Component	Fy
LCS	1
Label	



Unnumbered figure from Section: 15.4 Result Viewing Using Post-processing (Mode Shape Contour)

COPYRIGHTED MATERIAL. RESTRICTED USE ONLY